

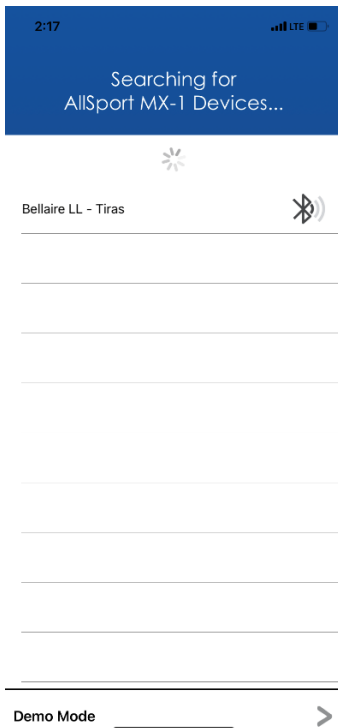
Weston/Tiras

Operating the Scoreboard:

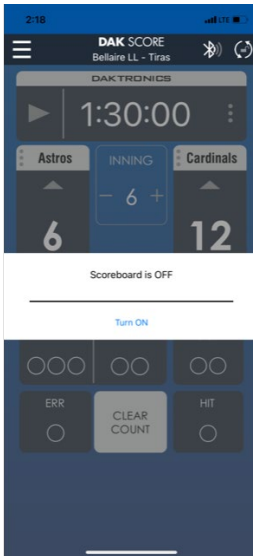
1. Download the DAK Score app onto your phone/tablet/whatever device you want to use to run the scoreboard. It looks like this:



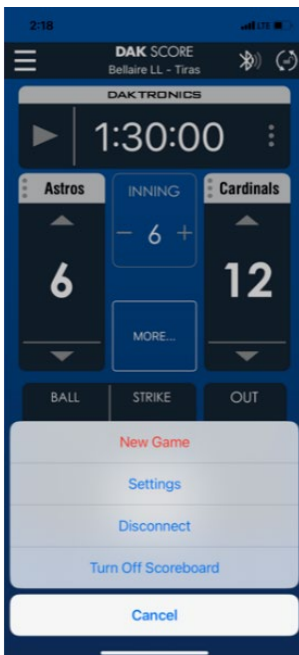
2. Prior to gametime, make sure your device's Bluetooth is turned on.
3. Open the DAK Score app on your device. Once open, if you're in close proximity to the press box at either Weston or Tiras (i.e., sitting in the stands), the screen should look like this:



4. Click on “Bellaire LL – Tiras” (or “Bellaire LL – Weston”), and the next screen should look like this:



5. Click “Turn On,” and the scoreboard should turn on. You may need to reset the board; you can do this by clicking on the 3-line menu bar in the upper-left corner, and the menu in the picture below will appear. Click on “New Game” to reset. This is also where you’ll go to after the game to turn off the board.



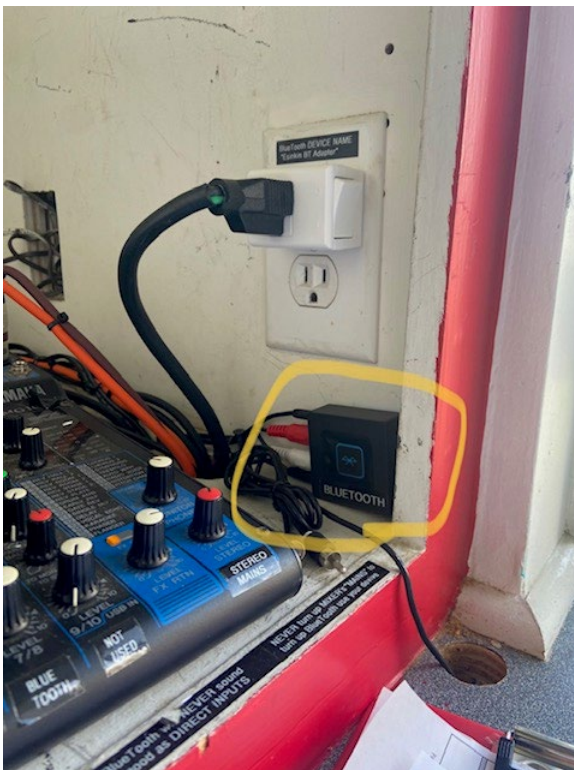
6. Board operation (balls, strikes, outs, runs scored) is pretty easy and self-explanatory within the app. Don't forget to advance the inning after the bottom half of the inning is over!

Operating the PA System via Bluetooth:

Note: Operating remotely won't allow you to use the PA system microphone. We have also seen in the past that operating remotely might lead to slightly degraded audio quality, and we have also sometimes seen the Bluetooth connection to the PA system cut in and out occasionally.

1. Make sure the PA system is powered on. Check in the pressbox and ensure the sound system is on (the Tiras setup is pictured below; the white switchbox in the plug-in outlet controls the entire system).
2. Make sure your device's Bluetooth is turned on, then go to Bluetooth setup in your device's settings. If you're in close proximity to the press box at either Weston or Tiras (i.e., in the stands), you should see the device name "Ensinkin BT Adapter" appear in the list of connectable devices; connect to it.

If "Ensinkin BT Adapter" doesn't appear on your list, you'll need to go into the press box, find the Bluetooth box, and press the connection button (as shown circled in the picture below from Tiras). You should then see "Ensinkin BT Adapter" appear on your Bluetooth list, and hear the "beep-beep" confirmation.



3. Start running walkup music through your selected app. You shouldn't need to adjust the PA speaker volume on the mixer box (as seen in the picture above); instead, control the volume through your device.

Operating the PA System in the pressbox:

1. If in the pressbox, you can choose to either a.) connect your device to the PA system wirelessly via Bluetooth as described in the previous section; or b.) connect your device via the hard-wire connection which should be available in the pressbox.
2. From the pressbox, you can also use the PA system microphone, if you want. The mic should already be plugged into the PA system, all you should need to do is turn on the mic.
3. Same instructions as above regarding system power, volume, etc.